

# **Croesyceiliog School**

***Ysgol Croesyceiliog***



## **KS4 Learning Pathways**

***Llyfryn Llwybrau Dysgu***

**2024—2026**

## CONTENTS PAGE CYNNWYS

### Page

2	Contents
4	Headteacher's Message
5	Deputy Headteacher's Message
6	Learning Pathways Overview

### Compulsory Subjects

16	English Language GCSE
17	English Literature GCSE
18	Entry Level English
19	Mathematics GCSE
20	Mathematics Numeracy GCSE
21	Additional Mathematics Level 2
22	Mathematics Entry Level Certificate
23	Science Double Award GCSE
24	Biology GCSE
25	Chemistry GCSE
26	Physics GCSE
27	Equality and Diversity NCFE BTEC
28	Welsh GCSE
29	Welsh Baccalaureate GCSE/Skills Challenge Certificate



## Optional Subjects

- 31 Art Design GCSE Levels 1 & 2
- 32 Design Technology – Product Design GCSE Levels 1&2
- 33 Digital Technology GCSE Levels 1& 2
- 34 Drama GCSE Levels 1 & 2
- 35 Food and Nutrition GCSE Levels 1 & 2
- 36 French GCSE Levels 1 & 2
- 37 Geography GCSE Levels 1 & 2
- 38 Health and Social Care & Childcare GCSE Levels 1 & 2
- 39 History GCSE Levels 1 & 2
- 40 ICT Vocational Award Levels 1 & 2
- 41 Media Studies GCSE
- 42 Music GCSE Levels 1 & 2
- 43 Photography GCSE Levels 1 & 2
- 44 Physical Education GCSE Levels 1 & 2
- 45 Public Services BTEC First Award Level 1 & 2
- 46 Religious Studies GCSE
- 47 Retail Business Vocational Award Levels 1 & 2
- 48 Spanish GCSE Levels 1 & 2
- 48 Sport BTEC First Award
- 50 Sweet - The Personal Growth & Wellbeing Programme BTEC First Award Level 2





## HEADTEACHER'S MESSAGE

### NEGES Y PENNAETH

Dear students,

You are about to embark on one of the most significant aspects of your education - your Key Stage Four studies. The next few years will be a very exciting yet challenging time for you so making the right choice is essential.

This booklet is designed to help you understand the choices available, as well as helping you to make the right choices for you personally. Some of you will already have a clear idea about the sort of career that you would like to have, and some of you will take much longer to decide. Either way, there is no need to worry. Speaking to your parents, your teachers and your form tutor will be important. These groups of people know you best of all and can give you advice based on this. Also, there is no substitute for doing your own research. Once your choices have been made and agreed, it will be very difficult to change them.

Whatever the stage you have reached, it is a good idea to make your decisions about your GCSE courses based upon some of the following tips:

- Choose subjects that you will enjoy
- Choose subjects that you are good at
- Choose subjects that will support your career plans
- Choose a combination of subjects that give you a broad experience of learning
- Do not choose subjects because you want to be with your friends
- Do not choose subjects because you like the teacher

I am very proud of every subject area and every teacher here at Croesyceiliog. I know whichever courses you choose to do, you will receive the highest quality teaching and opportunities. You will be supported at every stage by your Form Tutor, Wellbeing and Curriculum leaders and all staff. However, you also need to know that being successful at KS4 demands maturity, and that maturity begins now by making sure you choose your courses wisely.

I very much look forward to supporting you with this process and the next exciting chapter in your life at Croesyceiliog School.

Ms N Richards  
Headteacher



## **DEPUTY HEADTEACHER'S MESSAGE**

### **NEGES Y DIRPWY BENNAETH**

Dear students,

In years 7-9 you have followed a curriculum designed for you by the school. As you prepare to enter Key Stage 4 however, you will have the opportunity to make some choices regarding your education, personalising aspects of your study.

Although you may not yet know what career you want to pursue in the future, Croesyceiliog School offers a broad curriculum allowing you to study a range of subjects so that you can keep your options open. You will have to make some important decisions in the next few weeks to ensure that you choose the correct combination of subjects to study in year 10 and 11. Making the right choices now will help to ensure that you go on to achieve your full potential in the future.

Our options process commences with you receiving this booklet, and a link will be shared with you to our school website where you can find out more about each option subject by watching video clips.

Through registration periods and designated lessons, you will receive further guidance.

Detailed advice will be available to you and your parents and guardians to help you choose the most suitable subjects.

Once your option choices are collated, I will look to use your choices to create option blocks, which allow as many students as possible to follow their chosen pathway.

I hope you find this brochure informative and that you will choose a wise learning pathway that you will enjoy.

Mr A Davies  
Deputy Headteacher

# LEARNING PATHWAYS OVERVIEW

## TRAWSDORIAID LLWYBRAU DYSGU



### Choosing your Learning Pathway/Dewis eich Llwybr Dysgu

During the first three years at Croesyceiliog School, all students follow a common curriculum.

In Year 10 there are significant changes. You can begin to shape your Learning Pathway by making choices regarding your future studies. You may choose to:

- ✓ Continue to study some subjects
- ✓ End your study in some subjects
- ✓ Start studying completely new subjects

For the first time **YOU** will have some choice in the subject you study.

A Learning Pathway should include:

- ✓ Core National Curriculum Subjects – English, Maths and Science
- ✓ Statutory lessons – Welsh, Religion Values & Ethics, Physical Education
- ✓ Welsh Baccalaureate Skills Challenge Certificate, which includes Personal, Social and Careers Education
- ✓ A broad and balanced range of subjects. Many of you will make sure that you continue to study a humanities subject, a language and a creative or technical subject
- ✓ Subjects which will suit and extend your abilities
- ✓ Subjects you need for your future career
- ✓ Subjects you enjoy





## Compulsory subjects

### Pynciau Craidd

All students will study the following subjects. More details can be found in the subject pages later in this brochure.

#### **English**

All students will study English Language GCSE, and nearly all students will also study English Literature GCSE.

#### **Maths**

All students will study two Maths GCSE courses, Maths - Numeracy and Maths - Applications.

#### **Science**

You will be entered for the most suitable Science pathway, depending on your achievement in all of your school work so far. The final decision on your Science pathway will be made by Deputy Headteacher, Mr A Davies in conjunction with leaders from the Maths, and Science Faculties together with information on your attitude to learning across Key Stage 3.

Most students will study double award GCSE Science.

#### **Welsh Baccalaureate - Skills Challenge Certificate (SCC)**

You will have separate Skills Challenge Certificate lessons in which you will continue your personal, social and careers education and develop skills that will help you later in life. The SCC is a qualification equivalent to one GCSE.

#### **Welsh**

Nearly all students will take a GCSE in Welsh Language, and you have already begun the study of this course in year 9

#### **Religious Education**

Nearly all students will follow the Equality and Diversity BTEC Level 2 pathway. For those that wish to study Religious Studies GCSE, this is available as an option.

#### **Physical Education**

In order to help encourage a healthy lifestyle, all students will continue to have PE lessons. If you wish to gain a qualification in PE, then it is available as an option.

#### **Life Skills**

All students will study a life skills course that will follow a Personal and Social Education (PSE) curriculum that will include developing physical health and wellbeing, and supporting students through the transition from education to the world of work.

## Options

### Opsiynau

We generally advise that you choose a broad and balanced range of subjects. To help with this, the list below is split into Humanities, Languages and Creative/Technical subjects.

You **do not** have to choose one from each list, but if you do, it will ensure that you have a balanced choice.

#### ***Humanities***

GCSE Geography

GCSE History

GCSE Religious Education

Retail Business Vocational Award  
(Business Studies)

#### ***Languages***

GCSE French

GCSE Spanish

#### ***Creative and Technical***

GCSE Art & Design

GCSE Drama

GCSE Product Design

GCSE Digital Technology

GCSE Media Studies

GCSE Food & Nutrition

GCSE Health and Social Care

GCSE Photography

GCSE Music

IVET Sport

IVET Public Services

GCSE Physical Education

ICT Vocational Award

IVET Sweet





## Types of courses

### Math o Gyrsiau

When you read the subject pages in this brochure, you will be told the type of qualification you will be taking. This section explains the types you will see.

#### ***GCSE / TGAU***

GCSE stands for General Certificate of Secondary Education. The qualification mainly involves studying the theory of a subject, combined with some investigative work. Some subjects also offer practical work.

GCSEs are graded from A\*-U. All GCSE qualifications have at least one written exam and some also have non-examined assessments (NEA). Within some subjects there is a choice of tier, which will ensure that you are examined on work that appropriately challenges you, giving access to a narrower range of possible grades. Subject teachers will advise students and parents on which tier is most suitable, but this decision will be made later in the course and will depend on progress made.

#### ***IVET (Initial Vocational Education and Training)***

There are a range of subjects which come under the heading of IVET. In our curriculum offer we have several BTEC subjects. Students will be given clear guidance on the sections that they need to include in a lengthy piece of work, and will have to show that they can work hard consistently throughout the course to meet deadlines.

Each of these subjects will have less emphasis on examination, usually with 75% of the marks coming from written work completed in lessons and 25% coming from an externally set test.

All of these vocational courses will lead to a final grade that is equivalent to one GCSE. The table below shows how the grades awarded relate to GCSE:

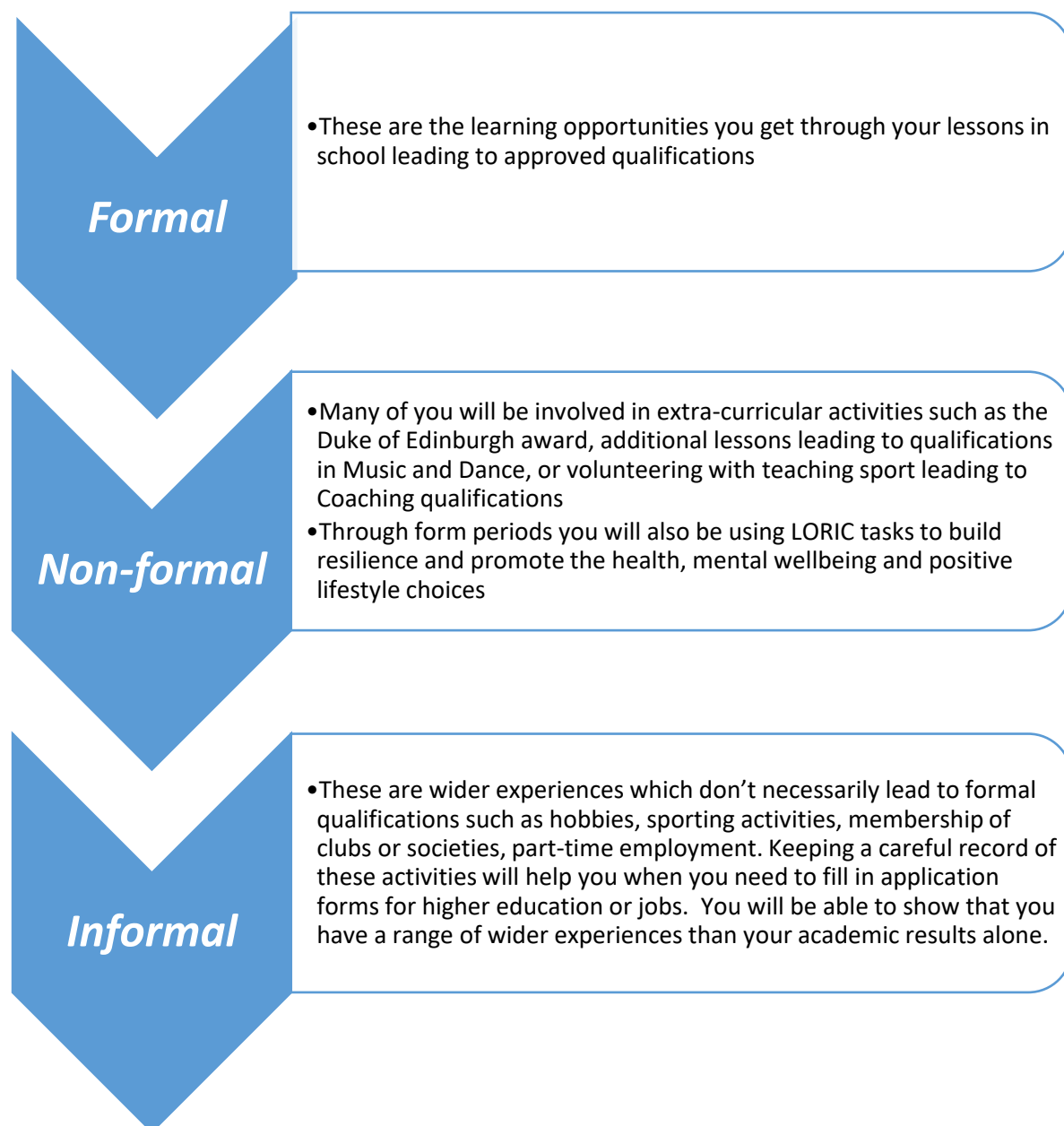
IVET	GCSE
Level 2 Distinction*	A*
Level 2 Distinction	A
Level 2 Merit	B
Level 2 Pass	C
	D
	E
Level 1 Pass	
	F
	G

## Types of learning experience

### Math o Brofiadau Dysgu

At Croesyceiliog School, we recognise the value of success in the compulsory and option subjects, but are well aware that it is not all that matters in developing a rounded person. Many valuable skills are gained from other learning experiences that you undertake, and should be discussed with your form tutor.

Your learning Pathway can be split in to three areas:



## Making a choice

### Gwneud Dewis

All option choices **must** be taken for **two** years.

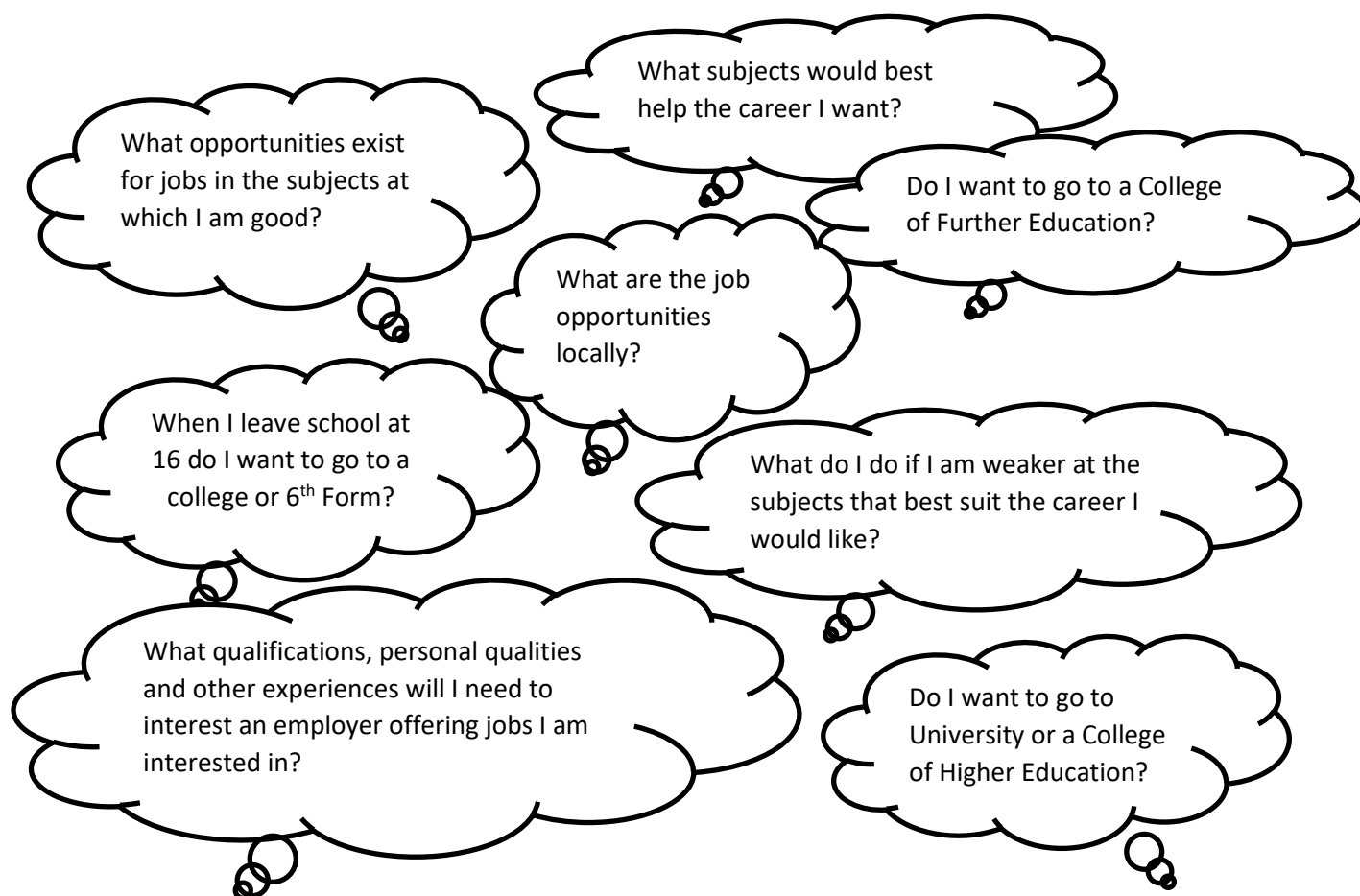
Whilst every attempt will be taken to allow you to study what you have chosen, remember:

- Your ability to study the subject successfully will be considered and this may involve us looking at your attitude to learning as well as your achievement in KS3
- We have to balance numbers, which may lead us to restrict the number of students studying a particular subject, or deciding that too few students have opted for a subject for it to be allowed to run
- You will be given advice to help you finalise your choices
- We will discuss any problems with you and your parents as appropriate

## Your Future / Eich Dyfodol

The decisions you make now about the subjects you will study in KS4 are very important because they can affect your future career chances.

You will be helped in making these decisions by your subject teachers, your form tutors and, of course, by your own parents and guardians. You will have to ask yourself questions such as:



You will also think of other questions. This booklet cannot give you all the answers, but it will help you get the advice necessary for making sensible choices of subjects.

## How do I choose my Learning Pathway? Sut ddylwn i ddewis fy Llwybr Dysgu?



### ***Good reasons***

The subject will be useful for my future plans

I am good at the subject and will be motivated to do well in it

My teacher has told me I am capable of doing well in the subject if I do my best

### ***Poor reasons***

I like the teacher

My friend is taking the subject

The subject is an easy option

## Support for students / Cefnogaeth i Ddysgwr

Explanation, guidance and help making your choices will be available from teachers, Lead Practitioners, Form Tutors, your Director of Wellbeing Mrs Kent and from senior staff. Support is also available from the Careers Wales Online website, <http://careerswales.com>

Deputy Headteacher Mr A Davies, will deal with any queries about the options process and what to do if you have a clash between two subjects you want to study.

You must also discuss your intentions with your parents/guardians. They will want to help you make your decisions, and will know your strengths and interests.

You may well find it useful to talk to friends in year 10 and 11 about course content, as they will have studied the courses which you are about to start.

More detailed information about each subject, whether compulsory or optional, is included later in this brochure, including course content and methods of assessment. Further information can be sought from your subject teachers.

Please be aware that for Free School Meals (eFSM) students any need to attend compulsory field trips or resources required for a course will be covered.



## Additional Learning Needs

### Anghenion Dysgu Ychwanegol

The Additional Learning Needs (ALN) team supports students in all areas of the curriculum. Mrs K Williams Director of Inclusion and Additional Learning Needs Coordinator, offers support to ALN students and their parents and carers during the options process, advising them on the most appropriate pathways of study. Our enthusiastic, experienced and skillful team work in partnership with teachers, parents, carers and other agencies, to ensure those students with additional learning needs may experience success through their participation in learning.



Mrs H Rawle-Jones  
Assistant Headteacher & ALNCo



Mrs T Edmunds  
HLTA Literacy



Mrs H Powell  
HLTA Literacy



Mrs J Dibble  
Wellbeing Support



Mrs A Gregory  
LSA Nurture

Our approach is to provide targeted, timely support for students to overcome barriers to learning and help them to make the best possible progress. This can include one or more of the following: adult support in lessons, structured and bespoke interventions within and outside of the classroom, and access to a highly differentiated curriculum package.

We are also supported by a number of external agencies that include the Educational Psychology Service, Local Authority Sensory and Communication Support Services (SenCom) specialists, Occupational Therapists and the Autism Outreach Team.



## The Options Process / Y Broses Opsiynau

### *Options presentations / Gwasanaethau Opsiynau*

During this term you will have presentations introducing the options process and be given information about subjects you have not previously studied

### *Parent's and Options evenings / Nosweithiau Rhieni ac Opsiynau*

You have an opportunity at the parents' Evening to get feedback on your progress in the last year of KS3 at the year 9 parents' evening in February. This will help you be realistic about where your strengths lie, and what subjects you might wish to continue studying.

The Learning Pathways presentation by Mr A Davies during the Options Evening will give you more details about what we offer along with the chance to answer questions.

### *Options forms / Ffurflenni Opsiwn*

The virtual free option choice form will be shared with parents on Thursday 8<sup>th</sup> February. The virtual free choice option form to be completed by **Monday 11<sup>th</sup> March**.

### *Student interviews / Cyfweiliadau Opsiwn*

There will be opportunities to discuss your choices during registration periods. Parents will be contacted as appropriate if we need to discuss a change to your choice of options.

Date	Event
Wednesday 6 <sup>th</sup> December	Year 9 Parents' Evening
Monday 15 <sup>th</sup> January – Friday 26 <sup>th</sup> January	Year 9 Careers Fortnight with careers activities including career talk videos
Friday 19 <sup>th</sup> January	Year 9 options booklet shared with parents and supporting subject videos published on the school website. This information gives further detail on the option process plus provides detailed information on our compulsory and optional courses.
Monday 29 <sup>th</sup> January – Friday 9 <sup>th</sup> February	Year 9 Options Fortnight with additional registration and designated lessons option guidance
<b>Thursday 30<sup>th</sup> January</b>	<b>Careers Fair (Years 9 &amp; 11)</b>
<b>Wednesday 7<sup>th</sup> February</b>	<b>Year 9 Options Evening (in school)</b>
Thursday 8 <sup>th</sup> February	Year 9 options form goes live.
<b>Monday 11<sup>th</sup> March</b>	<b>Virtual free choice option form completed</b>
Early Summer Term	Individual meetings with Year 9 students to discuss choices
Late Summer Term	Confirmation with parents of pathway ready for September 2024

# COMPULSORY SUBJECTS

## PYNCIAU CRAIDD



## English Language GCSE Levels 1 & 2

Examination Board: WJEC

### Course Outline

GCSE promotes the key literacy skills of oracy, reading and writing which underpin students' ability to understand and communicate accurately. Oracy, reading and writing skills will be recognised in GCSE English language. Candidates should be inspired, moved and challenged by following a broad, coherent, satisfying and worthwhile course of study. They will develop their ability to use English as active and informed citizens and be able to speak, listen, read and write fluently, appropriately, effectively and critically – for a wide range of personal, functional and social purposes. Candidates will be expected to respond to a wide range of written texts, including challenging and dynamic texts.

### What will I study?

- ✓ Reading skills
- ✓ Writing skills
- ✓ Description
- ✓ Narration
- ✓ Exposition
- ✓ Argumentation
- ✓ Persuasion
- ✓ Instruction



### How will I be assessed?

Students will sit external exams throughout Year 10 & 11. Students will also sit PPEs.

Two external exams (80%) May/June 2026.

Two speaking and listening assessments (20%) July 2025 and Autumn 2025.

### Post 16 pathways and career opportunities

The skills you gain through studying English are transferable to all job sectors. All employers regard GCSE English Language as a sign that you can communicate effectively.

Related jobs: digital copywriter, editor, lexicographer, journalist, teacher, writer, researcher, social media manager, politician, lawyer, public relations, advertising, marketing and business.



## English Literature GCSE Levels 1 & 2

Examination Board: WJEC

### Course Outline

Students will consider a variety of texts which will improve their analytical skills, show their ability to handle complex ideas and interpret information in a wider context. This GCSE will also develop planning and research skills alongside gaining knowledge of culture, philosophy and human behaviour.

### What will I study?

- ✓ Macbeth
- ✓ Of Mice and Men
- ✓ An Inspector Calls
- ✓ Heroes
- ✓ Poetry

### How will I be assessed?

Two external exams (75%)

Unit 1 May 2025

Unit 2 May 2026

Two controlled assessments (25%)

Autumn 2025 & Spring 2025

### Post 16 pathways and career opportunities

The skills you gain through studying English are transferable to all job sectors. All employers regard GCSE English as a sign that you can communicate effectively.

Related jobs: journalist, teacher, writer, researcher, social media manager, politician, lawyer, public relations, advertising, marketing and business.



# Entry Level Certificate in English

Examination Board: WJEC



## Course Outline

The entry level English course allows students to:

- ✓ communicate in a variety of situations and for a range of purposes and audiences
- ✓ communicate with increasing independence and clarity
- ✓ participate in group and individual activities
- ✓ engage with a wide range of literary and non-literary texts, including non-continuous texts
- ✓ identify and locate facts, ideas, information and opinions in texts
- ✓ understand and express opinions
- ✓ develop their skills in writing to communicate clearly
- ✓ write for different audiences and purposes in a variety of forms
- ✓ show increasing control of presentation of writing (including spelling, punctuation and grammar)

## What will I study?

Students will work in a variety of contexts designed to be enjoyable for all participants. This will allow them to:

- ✓ Make contributions to group and individual tasks
- ✓ Show their understanding of what is read
- ✓ Write with increasing independence
- ✓ Review accuracy of their own work

## How will I be assessed?

Component 1: Written Examination: 1 hour (25%)

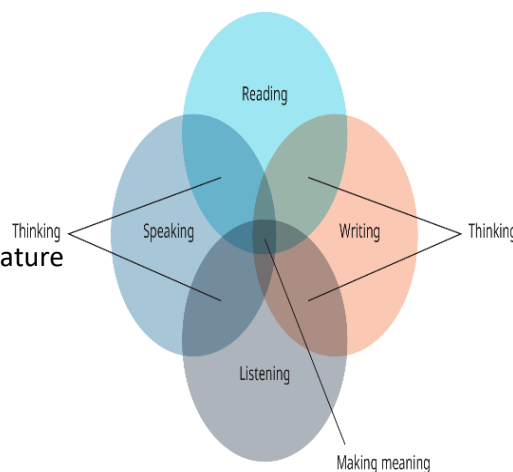
- ✓ Section A: Non-Literary reading
- ✓ Section B: Functional writing

Component 2: Topic Tests: 4 × 0.5 hours (60%)

- ✓ Test 1: Response to twentieth/twenty-first century literature
- ✓ Test 2: Editing and sequencing
- ✓ Test 3: Narrative writing
- ✓ Test 4: Proofreading

Component 3: Practical Assessment 2 × 2 hours (15%)

- ✓ Task 1: Presenting a point of view
- ✓ Task 2: The World of Work



## Post 16 pathways and career opportunities

The skills you gain through studying English are transferable to all job sectors.



## Mathematics GCSE Levels 1 & 2

Examination Board: WJEC

### Course Outline

GCSE Mathematics will build on and progress from the levels of maths expected at the end of KS3 through the National Curriculum Programme of Study for GCSE Mathematics. GCSE Mathematics will extend aspects of maths needed for progression to scientific, technical or further mathematical study.

There are four main areas of study;

- ✓ Number
- ✓ Algebra
- ✓ Shape, Space and Measure
- ✓ Handling Data Probability

### What will I study?

- ✓ Understanding of mathematical methods, techniques and concepts required for progression into mathematically-related disciplines or employment routes.
- ✓ Connections between different areas of mathematics.
- ✓ Reason mathematically, construct arguments and simple proofs, and make logical deductions and inferences.
- ✓ Develop and refine strategies for solving a range of mathematical and real world problems.

### How will I be assessed?

There are two written papers at the end of the course; one calculator and one non-calculator exam.

Higher (A\*-C) and intermediate (B-E) tier papers last 1 hour and 45 minutes.

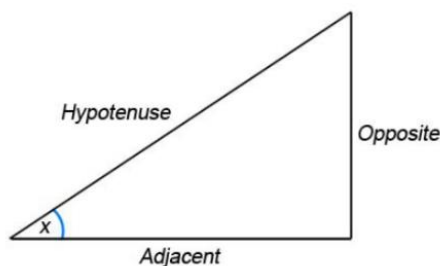
The foundation (D-G) tier papers are 1 hour and 30 minutes

All papers will comprise a variety of questions including multiple choice questions, short and longer answers or structured and unstructured questions which may be set on any part of the subject content learnt throughout students' high school education.

### Post 16 pathways and career opportunities

GCSE Mathematics will lead you on to further study in mathematics, further maths, applied maths and statistics.

Related jobs: accounting, engineering, teaching, IT, scientific research, programming, architect, construction, astrophysics, economics, management studies, surveying.



# Mathematics Numeracy GCSE Levels 1 & 2

Examination Board: WJEC

## Course Outline

GCSE Mathematics-Numeracy builds on and progresses from the levels of numeracy expected at the end of Key Stage 3 through the Literacy and Numeracy Framework and will assess the mathematics that learners will need in their everyday lives.

It has an emphasis on the aspects of mathematics which are most relevant for preparing learners to make decisions about further learning opportunities and career choices. There will also be opportunities for learners to make informed decisions about the use of technology, the management of money and the use of statistics.

## What will I study?

- ✓ Mathematical and statistical methods that are required for everyday life.
- ✓ How to select and apply appropriate mathematics and statistics in everyday situations and contexts from the real world.
- ✓ Mathematics to represent, analyse and interpret information.
- ✓ How to interpret mathematical results.

## How will I be assessed?

There are two written papers at the end of the course; one calculator and one non-calculator exam. Higher (A\*-C) and intermediate (B-E) tier papers last 1 hour and 45 minutes.

The foundation (D-G) tier papers are 1 hour and 30 minutes.

All papers will comprise a variety of questions including multiple choice questions, short and longer answers or structured and unstructured questions which may be set on any part of the subject content learnt throughout students' high school education.

## Post 16 pathways and career opportunities

Numeracy will lead you on to further study in mathematics.

Related jobs: accounting, engineering, teaching, statistician, actuary, games designer, quantity surveyor, financial manager, IT, insurance underwriter, CAD technician, forensic scientist, astronaut, architect, car designer, medical research.





## Additional Mathematics Level 2

Examination Board: WJEC

### Course Outline

This course is targeted at those students who have demonstrated an aptitude for Mathematics and have already expressed and demonstrated a desire to continue to some form of post-16 Mathematics course of study. It is not a pre-requisite course for either Maths or Further Maths A levels, however, it is an excellent qualification to have to bridge the gap between GCSE and A level prior to moving on to college.

There are five main areas of study;

- ✓ Algebra
- ✓ Coordinate geometry
- ✓ Mensuration
- ✓ Calculus
- ✓ Trigonometry

### What will I study?

- ✓ Formulate and reinforce manipulative algebraic and trigonometric skills which are contained in the GCSE Mathematics specification.
- ✓ Develop knowledge, skills and understanding of mathematical methods and concepts which are further to those contained in a GCSE Mathematics specification.
- ✓ Reason mathematically, make deductions and inferences, draw conclusions and engage with formal mathematical proof.
- ✓ Develop an awareness of the holistic nature of mathematics.

### How will I be assessed?

There is one written paper at the end of the course which lasts 2.5 hours (calculator allowed). The maximum mark on the paper will be 100.

WJEC Level 2 Certificate in Additional Mathematics is not tiered and is reported as distinction, merit or pass, where distinction is the highest award.

### Post 16 pathways and career opportunities

Level 2 Additional Mathematics will lead you on to further study in mathematics, further maths, applied maths and statistics.

Related jobs: accounting, engineering, teaching, IT, scientific research, programming, architect, construction, astrophysics, economics, management studies, surveying.

$$\int_a^b f(x)dx$$

# Entry Level Certification in Mathematics-Numeracy



Examination Board: WJEC

## Course Outline

WJEC Entry Level Certificate in Mathematics-Numeracy is designed for learners who may initially find GCSE Maths a daunting prospect. The qualification will assess the mathematics that learners will need in their everyday lives, in the world of work, and in other curriculum areas. It provides learners with a broad, coherent, satisfying and worthwhile course of study. This qualification builds students' confidence during Year 10 in order to best prepare them for their GCSE Maths and Numeracy in Year 11. This will count as an additional Level 1 GCSE Qualification to the two GCSEs students will sit in Maths and Numeracy.

## What will I study?

The subject content is made up of four stages. Each stage includes number, measure and statistics plus some aspects of algebra, geometry and probability. All content will develop learners' ability to:

- ✓ Make mental calculations and calculations without the aid of a calculator
- ✓ Make estimates
- ✓ Understand 3D shape
- ✓ Collect data
- ✓ Answer questions that span more than one topic area of the curriculum

## How will I be assessed?

### Unit 1- Written examination (with a calculator)

1 hour 25% of qualification 60 marks

### Unit 2- End of stage tests

4 x 30 mins 60% of qualification 120 marks. The tests for stages 1 and 2 are non-calculator. A calculator is permitted for stages 3 and 4.

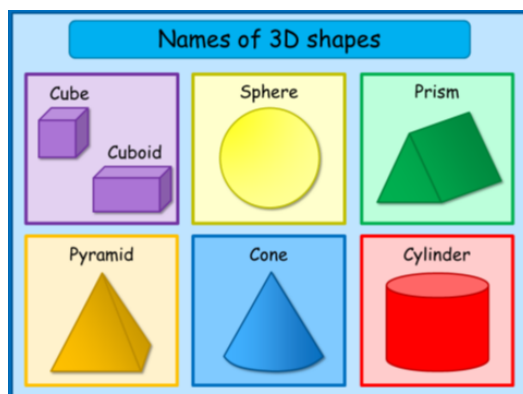
### Unit 3- Practical Assessment

4 x 1 hour 15% of qualification 40 marks.

This assessment gives candidates the opportunity to demonstrate their ability to work practically.

## Post 16 pathways and career opportunities

This course will prepare students for further studies in mathematics, e.g. GCSE Mathematics, GCSE Numeracy or mathematics related vocational courses.



## Science Double Award GCSE Levels 1 & 2

Examination Board: WJEC

### Course Outline

GCSE Science Double Award specification provides a broad, coherent, satisfying and worthwhile course of study. It encourages learners to develop confidence in, and a positive attitude towards, science and to recognise its importance in their own lives and to society.

This course leads to the award of 2 GCSE qualifications: students will be graded on a 15 point scale from A\*A\*, A\*A, AA etc.

The course will encourage students to:

- ✓ Acquire a body of scientific knowledge and the skills needed to apply this in new and changing situations.
- ✓ Acquire an understanding of scientific ideas and how they develop.
- ✓ Plan and carry out a range of investigations, considering and evaluating data critically.

### What will I study?

Year 10. Three modules:

- ✓ Biology, including cells, organ systems and ecosystems
- ✓ Chemistry, including the periodic table, water, ever changing earth and rate of reaction
- ✓ Physics, including generating and using electricity, transferring energy and the features of waves

Year 11. Three modules:

- ✓ Biology, including variation, homeostasis and micro-organisms
- ✓ Chemistry, including bonding, structures, metal extraction and crude oil
- ✓ Physics, including motion, Newton's laws, radiation and stars and planets

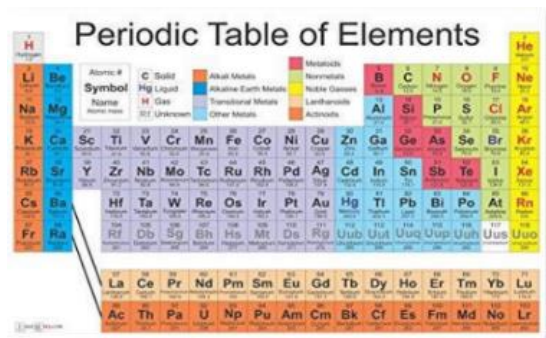
### How will I be assessed?

Year 10. Three written examination papers:

- ✓ Unit 1: Biology (15%)
- ✓ Unit 2: Chemistry (15%)
- ✓ Unit 3: Physics (15%)

Year 11. Three written examination papers plus practical:

- ✓ Unit 4: Biology (15%)
- ✓ Unit 5: Chemistry (15%)
- ✓ Unit 6: Physics (15%)
- ✓ Unit 7: Practical assessment (10%)



### Post 16 pathways and career opportunities

This GCSE can lead to A levels, vocational course and a huge range of careers.

Related jobs: medicine, engineering, environment officer, researcher. Manufacturing, inventor, construction, transport.

# Biology GCSE Levels 1 & 2

Examination Board: WJEC



## Course Outline

This WJEC GCSE Biology specification provides a broad, coherent, satisfying and worthwhile course of study. It encourages students to develop confidence in, and a positive attitude towards science and to recognise its importance in their own lives and to society.

Studying GCSE Biology provides the foundations for understanding the material world. Scientific understanding is changing our lives and is vital to the world's future prosperity, and all students should be taught essential aspects of the knowledge, methods, processes and uses of science.

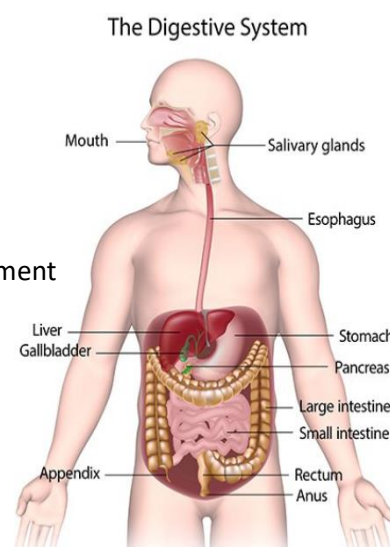
## What will I study?

### Unit 1: Cells organ systems and ecosystems

- ✓ Cells and movement across membranes
- ✓ Respiration and the respiratory system in humans
- ✓ Digestion and the digestive system in humans
- ✓ Circulatory system in humans
- ✓ Plants and photosynthesis
- ✓ Ecosystems, nutrient cycles and human impact on the environment

### Unit 2: Variation, homeostasis and micro-organisms

- ✓ Classification and biodiversity
- ✓ Cell division and stem cells
- ✓ DNA and inheritance
- ✓ Variation and evolution
- ✓ Response and regulation
- ✓ Kidneys and homeostasis



## How will I be assessed?

Unit 1: Written exam 1 hour 45 minutes (45%)

Unit 2: Written exam 1 hour 45 minutes (45%)

Unit 3: Practical assessment (10%). This will be carried out in school, but will be externally marked. It will take place in Jan/Feb of Year 11.

## Post 16 pathways and career opportunities

Biology is a fundamental subject for careers in science and health sectors but there are many other routes you can take.

Related jobs: marine biologist, microbiologist, conservation officer, pharmacologist, scientific researcher, soil scientist, medicine, veterinary nurse, zoologist.



# Chemistry GCSE Levels 1 & 2

Examination Board: WJEC

## Course Outline

This WJEC GCSE Chemistry specification provides a broad, coherent, satisfying and worthwhile course of study. It encourages students to develop confidence in, and a positive attitude towards science and to recognise its importance in their own lives and to society.

Studying GCSE Chemistry provides the foundations for understanding the material world. Scientific understanding is changing our lives and is vital to the world's future prosperity, and all students should be taught essential aspects of the knowledge, methods, processes and uses of science.

## What will I study?

### Unit 1: Chemical substances, reactions and essential resources

- ✓ The nature of substances and chemical reactions
- ✓ Atomic structure and the Periodic Table
- ✓ Water
- ✓ The ever-changing Earth
- ✓ Rate of chemical change
- ✓ Limestone

### Unit 2: Chemical bonding, application of chemical reactions and organic chemistry

- ✓ Bonding, structure and properties
- ✓ Acids, bases and salts
- ✓ Metals and their extraction
- ✓ Chemical reactions and energy
- ✓ Crude oil, fuels and organic chemistry
- ✓ Reversible reactions, industrial processes and important chemicals

## How will I be assessed?

Unit 1: Written exam 1 hour 45 minutes (45%)

Unit 2: Written exam 1 hour 45 minutes (45%)

Unit 3: Practical assessment (10%). This will be carried out in school, but will be externally marked. It will take place in Jan/Feb of Year 11.

## Post 16 pathways and career opportunities

Chemistry opens doors to a range of sectors and isn't restricted to the lab.

Related jobs: engineering, manufacturing, toxicologist, agriculture, teaching, medicine, research, hazardous waste management, metallurgy, perfume chemistry, cosmetics.



# Physics GCSE Levels 1 & 2

Examination Board: WJEC

## Course Outline

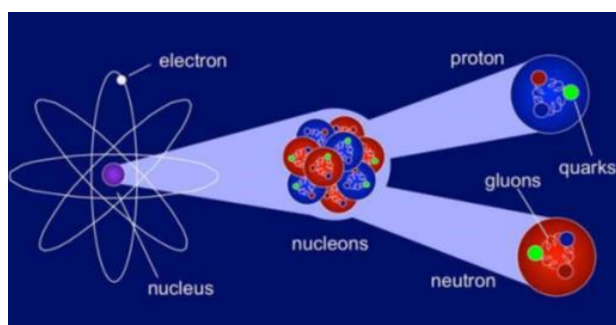
This WJEC GCSE Physics specification provides a broad, coherent, satisfying and worthwhile course of study. It encourages students to develop confidence in, and a positive attitude towards science and to recognise its importance in their own lives and to society.

Studying GCSE Physics provides the foundations for understanding the material world. Scientific understanding is changing our lives and is vital to the world's future prosperity, and all students should be taught essential aspects of the knowledge, methods, processes and uses of science.

## What will I study?

### Unit 1: Electricity, energy and waves

- ✓ Electric circuits
- ✓ Generating electricity
- ✓ Making use of energy
- ✓ Domestic electricity
- ✓ Features of waves
- ✓ The total internal reflection of waves
- ✓ Seismic waves
- ✓ Kinetic theory
- ✓ Electromagnetism



### Unit 2: Forces, space and radioactivity

- ✓ Distance, speed and acceleration
- ✓ Newton's laws
- ✓ Work and energy
- ✓ Further motion concepts
- ✓ Stars and Planets
- ✓ The Universe
- ✓ Types of radiation
- ✓ Half-life
- ✓ Nuclear decay and nuclear energy

## How will I be assessed?

Unit 1: Written exam 1 hour 45 minutes (45%)

Unit 2: Written exam 1 hour 45 minutes (45%)

Unit 3: Practical assessment (10%). This will be carried out in school, but will be externally marked. It will take place in Jan/Feb of Year 11.

## Post 16 pathways and career opportunities

Physics opens doors to a range of sectors and isn't restricted to the lab.

Related jobs: engineering, manufacturing, seismologist, radiation protection officer, researcher, nuclear scientist, sound engineer, renewable energy, particle physicist, pyro-technician.

## IVET Equality and Diversity NCFE Level 2 Certificate

Examination Board: Bedford College (Part of the Bedford College Group)

## Course Outline

- ✓ Introduce the concept of equality and diversity in a variety of environments including some communities and the workplace
- ✓ Highlighting how stereotyping and labelling affects individuals
- ✓ Outline the effects of prejudice and discrimination
- ✓ Allow you to examine rights and responsibility action to help support
- ✓ To provide a basis of further study and/or career development

The qualification will also help to:

- ✓ Raise your awareness of the issues surrounding equality and diversity.
- ✓ Apply this awareness through their actions in society, community and the workplace.

## What will I study?

You will study Equality and Diversity in society, the community and the workplace.

## How will I be assessed?

You will be assessed through your completed workplace.

## Post 16 pathways and career opportunities

You could progress to higher level qualifications in Equality and Diversity, due to the relevance to all sectors, such as:

- ✓ Youth work
- ✓ Community development work
- ✓ Health and social care
- ✓ Customer services/business subjects
- ✓ Early years care and education.



# Welsh GCSE Levels 1 & 2



Examination Board: WJEC

## Course Outline

The GCSE Welsh syllabus is an exciting and practical course which will prepare you to speak and use Welsh confidently in the workplace and in everyday life. This GCSE develops the language you have studied at Key Stage 3 and will give you the confidence to speak Welsh more independently. There are only three topic areas at GCSE: Employment, Wales and the World; and Youth.

## What will I study?

### Employment and the Workplace

School, subjects, activities in schools, events and celebrations in school, part-time work, future plans, college/university, the workplace, Welsh language skills for work.

### Wales and the World

Places in Wales, my area, activities in my area. The emphasis is on learning real life language that you can use outside the classroom, and on gaining real life skills. These skills include gathering information, use of data, proofreading and writing styles, and they will be valuable to you in your future studies and workplace, whichever language you use. Facilities, tourism, famous Welsh people, Welsh heroes past and present, sport in Wales, music, film, digital and other media, social issues, leisure, travel and holidays.

### Youth

Describing yourself, family and friends, hobbies and interests, sport, keeping fit and healthy, media, safety online, technology and gaming, shopping and using money.

## How will I be assessed?

### Unit 1: Speaking and listening examination

Taken in March/April of Year 10

### Unit 2: Speaking and listening examination

Taken early in summer term Year 11

### Unit 3: Reading and writing examination

Taken in summer of Year 11

### Unit 4: Reading and writing examination

Taken in summer of Year 11



## Post 16 pathways and career opportunities

The development of the Welsh language is a priority within Wales and almost every job advertisement suggests that Welsh is desirable. The Welsh government have given a target of a million Welsh speakers by 2050. Some of the areas where a Welsh qualification would be advantageous include: banking, business, council or government departments, retail outlets, tourism, public services, teaching, Police/Fire Service, media, journalism.

# Welsh Baccalaureate Levels 1 & 2 (Skills Challenge Certificate)



Examination Board: WJEC

## Course Outline

The Welsh Baccalaureate is compulsory for all students at Croesyceiliog in years 10-13 and is the overarching qualification in Wales. The Welsh Government has placed an increased importance on the Welsh Baccalaureate Qualification, in consultation with Universities and is as valued as English and Mathematics.

The performance of students is monitored and as such some students will be entered for the Foundation diploma.

The Welsh Baccalaureate National Diploma equates to one full GCSE and is graded A\*-C. The central focus of the Welsh Baccalaureate at Key Stage 4 is to provide a vehicle for 14-16 year olds to consolidate and develop essential and employability skills

## What will I study?

The seven essential and employability skills are:

- ✓ Literacy
- ✓ Numeracy
- ✓ Digital literacy
- ✓ Critical thinking and problem solving
- ✓ Planning and organisation
- ✓ Creativity and innovation
- ✓ Personal effectiveness

## How will I be assessed?

Individual project 50%

Enterprise and employability challenge 20%

Global citizenship challenge 15%

Community challenge 15%

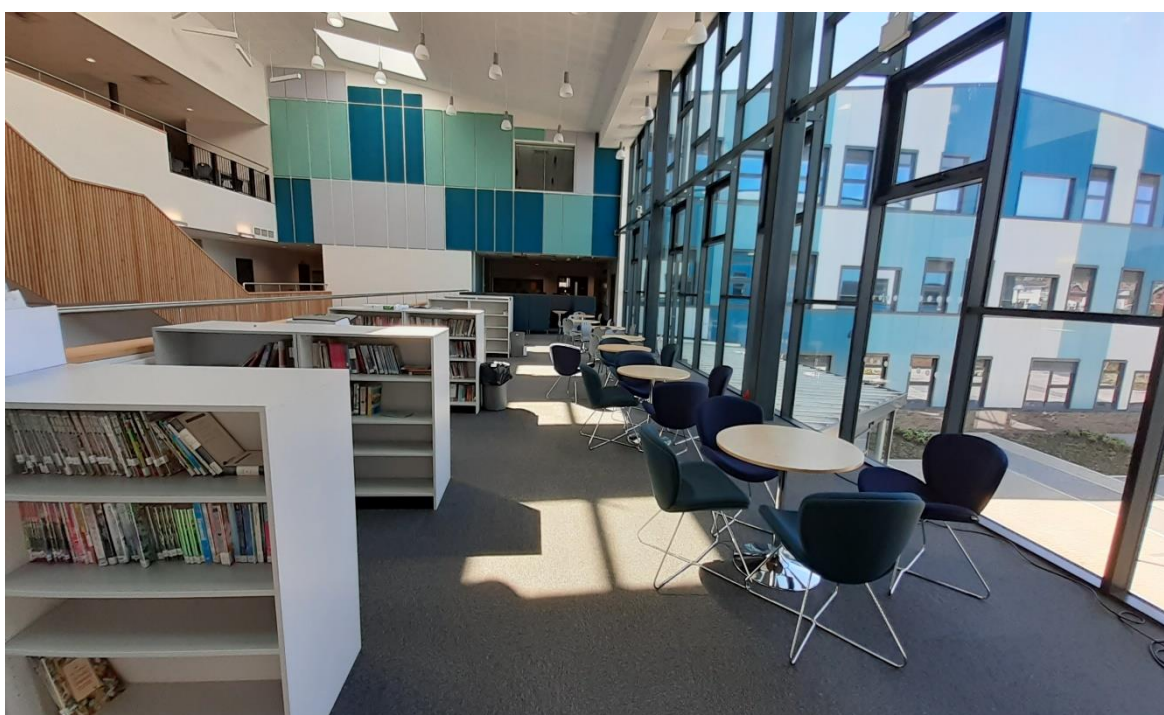
## Post 16 pathways and career opportunities

The Welsh Baccalaureate aims to enable students to develop and demonstrate an understanding of proficiency in essential and employability skills. These are the skills that employers and next-stage educators value and which students need for learning, work and life.

QUALIFICATION TITLE	LEVEL	GRADES AVAILABLE	WHEN IT IS USED
Foundation Welsh Baccalaureate	Level 1	Pass* and Pass	Different versions for use at Key Stage 4 or post-16.
National Welsh Baccalaureate	Level 2	A*, A, B and C	Different versions for use at Key Stage 4 or post-16.
Advanced Welsh Baccalaureate	Level 3	A*, A, B, C, D and E	Used post-16 only.

# OPTIONAL SUBJECTS

## PYNCIAU OPSIWN



## Art & Design GCSE Levels 1 & 2

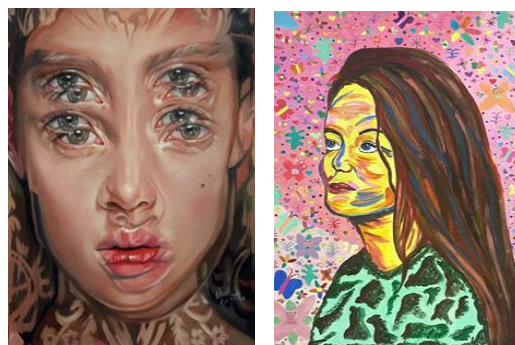
Examination Board: WJEC

### Course Outline

GCSE Art & Design offers scope for a wide variety of artistic skills and activities. These will include photography, sculpture, drawing, painting, illustration, ceramics, printmaking and using variety of art techniques and materials. There can be an element of written work as students are expected to write about and evaluate their own work and the work of other artists. They will need to explain how investigating other artists work has influenced their own practical work.

### What will I study?

- ✓ Photography
- ✓ Sculpture
- ✓ Drawing
- ✓ Painting
- ✓ Illustration
- ✓ Ceramics
- ✓ Printmaking



### How will I be assessed?

#### Assessment 1: Candidate portfolio (60%)

Internally set and developed from personal and/or given starting points. The candidate portfolio must be selected and presented by the candidate from work undertaken within the course and provide evidence of how the candidate has met each of the assessment objectives.

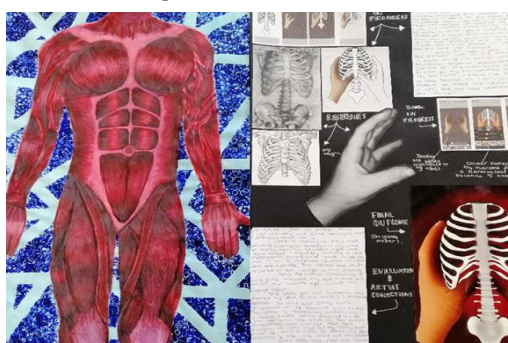
#### Assessment 2: Externally set examination task to elicit a personal response (40%)

The externally set task or starting point should enable learners to provide evidence of how they have met each of the assessment objectives, provide a sustained period of focused study of no longer than 10 hours and be presented to the learners no earlier than the start of January in the year of the examination.

### Post 16 pathways and career opportunities

This course will prepare you for further and higher education.

Related jobs: graphic design, film, video, photography, fine art, 3D design, fashion, textiles, sculptor, make-up artist, theatre design, architecture, animation and advertising.



## Design Technology – Product Design GCSE Levels 1 & 2

Examination Board: WJEC

### Course Outline

This GCSE course would be of interest to students who enjoy any aspect of Design and Technology. A course in Product Design offers a unique opportunity in the school curriculum for students to study a course that directly applies to the world of work. Students work through projects by identifying and solving real problems by designing and making products or systems in a wide range of contexts relating to their personal interests.

Product Design will also help develop Key Skills and capacity for imaginative, innovative thinking, creativity and independence. This course is based upon the combination of theory, design and practical understanding in order to produce quality products.

### What will I study?

- ✓ Developing
- ✓ Planning and communicating
- ✓ Product Analysis
- ✓ Sustainability
- ✓ Designers and influences
- ✓ Commercial manufacturing
- ✓ Materials and components

### How will I be assessed?

#### Unit 1: Written Paper (50%)

This paper will consist of 2 sections, **AO3** (10%) – Analyse and evaluate: design decision and outcomes in relation to products, and wider issues in design and technology. **AO4** (40%) Demonstrate and apply knowledge and understanding of design and technology principles.

#### Unit 2: Non Exam Assessment – NEA (50%)

**AO1** – Identify, investigate, analyse and outline design possibilities to address needs and wants.

**AO2** – Design and make prototypes and evaluate their fitness for purpose.

### Post 16 pathways and career opportunities

The course provides a foundation for A levels and vocational courses in the building environment, graphic design and engineering.

Related jobs: architect, industrial design, engineering, manufacturing, construction, computer science, graphic designer, media, motor vehicle technician, theatre design, computer aided design, surveyor, furniture designer and exhibition.



# Digital Technology GCSE Levels 1 & 2



Examination Board: WJEC

## Course Outline

This course is an updated version to the very popular ICT GCSE. The qualification will allow students to develop their understanding of the range of digital technology systems at use in our connected and globalised society. It will also allow students to explore the ever-evolving nature of digital technology systems and how these systems can be used productively, creatively and safely.

## What will I study?

### Unit 1:

The digital world

### Unit 2:

Digital practices

### Unit 3:

Communicating in a digital world



## How will I be assessed?

**Unit 1:** 1 hour 30 minutes on-screen exam (40%). This will cover theoretical content related to digital technology systems, the value of digital technology and perspectives on digital technology.

**Unit 2:** Non-exam assessment – NEA (40%). In Section A candidates will interrogate a supplied data set imported into a spreadsheet in order to inform Section B, where they will create a website incorporating either an animation or a game related to a set context.

**Unit 3:** Non-exam assessment – NEA (20%), Again this is a non-examined assessment focusing on marketing digital assets using social media. Candidates will create digital assets related to a set context and then formulate an online digital communications campaign around them.

## Post 16 pathways and career opportunities

The qualification is designed for students who wish to begin their journey towards a career that utilises digital technologies or to progress onto advanced level programmes of learning involving digital technologies. ICT jobs can be found all over the world.

Related jobs: web designer, systems analyst, games developer, sound technician, financial risk analyst, intelligence office, telecoms manager, digital marketing executive, IT security, network engineer.



# Drama GCSE Levels 1 & 2

Examination Board: WJEC



## Course Outline

GCSE Drama focuses on the development of performance, analytical and evaluative skills through exploration of a range of plays, practitioners and acting styles. Students participate in group devising and scripted work, and learn to apply their theoretical knowledge to justify their practical decisions as an actor, director or designer.

The course attracts both those students who wish to follow a path in the arts, and also those aiming to develop a range of skills and attributes that are transferable to any other future career, such as self-confidence, creativity, group working and decision making skills.

## What will I study?

Students develop their performance skills focusing on voice, movement and character development. Being an active, practical based subject, assessment is on performance work and also a final written exam that covers Drama theory, live performance analysis and students' own understanding of Drama practice.

## How will I be assessed?

### Unit 1: Devising Theatre 40%

Students will be assessed on either acting or design. Learners participate in the creation, development and performance of a piece of devised theatre using either the techniques of an influential theatre practitioner or a genre.

Learners must produce:

- ✓ A practical performance of their piece of devised theatre
- ✓ A portfolio of supporting evidence
- ✓ An evaluation of the final performance or design



### Unit 2: Performing for a Text 20%

Students will be assessed on either acting or design. They will study two extracts from the same play, participating in one performance using sections of text from both extracts.

### Unit 3: Interpreting Theatre 40%

Written examination: 1 hour 30 minutes

**Section A: Set Text.** A series of questions on one set text.

**Section B: Live Theatre Review.** One question from a choice of two requiring analysis and evaluation of a given aspect of a live theatre production seen during the course.

## Post 16 pathways and career opportunities

Drama helps to develop confidence, self-control and social/communication skills.

Related jobs: theatre, television, film, journalism, teaching, therapy, psychology, politics and presenter.

# Food and Nutrition GCSE Levels 1 & 2

Examination Board: WJEC

## Course Outline

This is an exciting GCSE course on offer designed to provide students with an opportunity to extend and apply skills, knowledge and understanding of Food and Nutrition through practical based activities. The WJEC GCSE in Food and Nutrition equips learners with the knowledge, understanding and skills required to cook and apply the principles of food science, nutrition and healthy eating. It encourages students to cook and enables them to make informed decisions about food and nutrition and allows them to acquire knowledge in order to be able to feed themselves and others affordably and nutritiously, now and later in life.

## What will I study?

The course is divided into six compulsory core areas of study:

- ✓ Food commodities
- ✓ Principles of nutrition
- ✓ Diet and good health
- ✓ The science of food
- ✓ Where food comes from
- ✓ Cooking food and preparation



## How will I be assessed?

### Unit 1: Written examination 40%

One tier paper covering the grades A\*-G which tests the knowledge and understanding of the core areas listed.

### Unit 2: Non-examination assessment 60%

#### Assessment 1: Food Investigation (20%)

Students are to investigate the chemical and functional properties of different ingredients. Students are given 10 hours to complete the task in school time. The investigation will include a practical element.

#### Assessment 2: Food Preparation (40%)

Students are to plan, prepare, cook and present a selection of dishes to meet requirements such as a dietary need, lifestyle choice or specific content. This will be carried out during 15 hours of lesson time and presented in a portfolio of evidence.

## Post 16 pathways and career opportunities

This GCSE provides the foundation for a wide range of further education courses such as food science, product development, sports science, hospitality and catering, food retail and environmental health.

Related jobs: chef, sports scientist, food manufacturing, nutritionist, herbalist, personal trainer, community education officer, international aid worker and food technologist.

## French GCSE Levels 1 & 2

Examination Board: WJEC



### Course Outline

**“Je parle français”** Music to the ears of employers in all fields of work. Do not lose out to your European and even English counterparts who all continue to study a modern foreign language to at least 16. Do not fall into the trap of thinking that you will not need to speak a foreign language if you stay in Wales. There are 10 European firms in Wales, employing 20,000 people. Whatever job you want to do, knowledge of a language is a useful extra skill, which may give you the edge over your rivals.

Students will increase their understanding of the written and spoken word. They will develop further their ability to express themselves orally and in writing. The four language skills developed are listening, speaking, reading and writing. Lessons will include a variety of activities, including ICT and videos. Homework will be set at least once a week, and will include listening, reading and writing.

### What will I study?

The context for learning the language is organised under three broad themes, specified by the WJEC, which build upon work done in Key Stage 3.

- ✓ Identity and culture
- ✓ Wales and The World
- ✓ Current and future study and employment

### How will I be assessed?

**Speaking** 25%-Oral test

Foundation tier – 7-9 minutes. Higher tier – 10-12 minutes

**Listening** 25% - Written examination

Foundation tier – 35 minutes. Higher tier – 45 minutes

**Reading** 25% \_Written examination

Foundation tier – 1 hour. Higher tier – 1 hour 15 minutes

**Writing** 25% - Written examination

Foundation tier – 1 hour 15 minutes. Higher tier 1 hour 30 minutes



The final grade awarded will depend on the tier for which the student is entered. Foundation tier – Grades G to C. Higher tier – Grades D to A\*. Students may be entered for different tiers in different papers, according to their individual strengths.

### Post 16 pathways and career opportunities

Language skills are in demand and can be used in almost career, particularly in businesses that trade internationally.

Related jobs: tourism, government, politics, media, publishing, journalism, translator, interpreter, education, law, fashion, linguist, teacher and international aid worker.

# Geography GCSE Levels 1 & 2

Examination Board: WJEC

## Course Outline

With growing interest in issues such as climate change, migration, environmental degradation and social cohesion, Geography helps you to make sense of the world around you. It is hands on, it is relevant and it is fun. The course will give you the chance to get to grips with some of the big questions which affect our world and understand the social, economic and physical forces and processes which shape and change our world.

There are so many ways of learning in Geography. It is very practical, with opportunities to learn new skills such as modern computer based mapping (called GIS), map skills, interpreting photographs, fieldwork skills, presenting, role play and debating techniques.

## What will I study?

### Unit 1:

- ✓ Global and local landscapes
- ✓ Rivers and flooding
- ✓ Coasts
- ✓ Urban and rural populations and changes

### Unit 2:

- ✓ Regional and global development
- ✓ Climate change
- ✓ Weather patterns
- ✓ Ecosystems
- ✓ Social challenges in the developing world
- ✓ Environmental challenges



### Unit 3:

- ✓ Fieldwork

## How will I be assessed?

The course is linear. This means that all students will sit two examination papers in the summer of Year 11. There is a single tier entry. Students can achieve A\*-G on the paper.

**Unit 1: Changing Physical and Human Landscapes 40%**

**Unit 2: Environmental and Development Issues 40%**

**Unit 3: Fieldwork 20%**

The Geography department is committed to giving students a range of day trip and longer residential trips. With fieldwork being a compulsory element of the specification, you will get the opportunity to apply the skills you learn in a real life context.

## Post 16 pathways and career opportunities

Geography develops your communication, teamwork, research and analysis skills. It prepares you for further education in all humanities subjects.

Related jobs: teaching, law, journalism, research, town planner, environment officer, meteorologist, conservationist, tourism, waste and water management, cartographer and surveyor

# Health & Social Care and Childcare GCSE Levels 1 & 2

Examination Board: WJEC



## Course Outline

This qualification equips students with knowledge, understanding and skills related to the development and care of individuals throughout the life cycle from conception to later adulthood. They will have the opportunity to develop their understanding of influences on human growth, development, behaviour and well-being. They will also gain an understanding of the social, physical, emotional and cultural needs of people who use care and support services, and recognise that each individual has a unique blend of abilities and needs. Students will gain an understanding of how service provision in Wales supports the development and well-being of individuals, to be able to make informed decisions now and in later life.

## What will I study?

- ✓ Human development across the life cycle
- ✓ Physical, social, emotional and intellectual health
- ✓ The importance of active participation on development and well-being
- ✓ Early intervention and prevention to promote and support growth, development and well-being for a range of circumstances

## How will I be assessed?

**Unit 1:** Written examination 1 hour and 30 minutes (40%).

**Unit 2:** Non-exam assessment. Approximately 25 hours. Comprising two tasks:

- ✓ **Task 1: Service Provision.** Approximately 10 hours (20%). The Service Provision investigation will assess the learner's knowledge, understanding and skills in relation to health and social care, and childcare service provision locally and nationally.
- ✓ **Task 2: Health Promotion.** Approximately 15 hours (40%). This task assesses the learner's knowledge, understanding and skills in relation to promoting and maintaining health and well-being.

## Post 16 pathways and career opportunities

This course leads you on to Level 3, 4 and 5 courses or apprenticeships within the care sector.

Related jobs: care assistant, nurse, radiographer, nursery nurse, paramedic, pharmacy technician, occupational therapist, dental nurse, physiotherapist, podiatrist, mid-wife, health visitor and social worker.



## History GCSE Levels 1 & 2

Examination Board: WJEC

### Course Outline

GCSE History is an interesting and highly valued academic qualification. It broadens the mind by helping us learn about how people lived. The course offers a stimulating insight into key events which have shaped our world today.

### What will I study?

- ✓ **Unit 1:** America 1910-1929
- ✓ **Unit 2:** Depression, War and Recovery 1930-1951
- ✓ **Unit 3:** Crime and Punishment c1500 to the present day
- ✓ **Unit 4:** Martin Luther King

### How will I be assessed?

**Unit 1:** 1 hour written exam (25%)

**Unit 2:** 1 hour written exam (25%)

**Unit 3:** 1 hour 15 minutes written exam (30%)

**Unit 4:** Controlled assessment (20%)



This requires a completion of two tasks:

- ✓ **Task 1:** a focus on source evaluation within the creation of an historical narrative
- ✓ **Task 2:** a focus on the formation of different historical interpretations of history

### Post 16 pathways and career opportunities

This GCSE gives students relevant skills which are transferable to the workplace such as research, communication, problem solving, persuasion and analysis.

Related jobs: curator, law, politics, teaching, archaeology, insurance, journalism, marketing, researcher, librarian and diplomat.



## ICT Vocational Award Levels 1 & 2

Examination Board: WJEC

### Course Outline

WJEC Level 1/2 Vocational Awards (Technical Awards) provide learners with opportunities to study vocational subjects alongside GCSEs and other general and vocational qualifications as part of a broad programme of study. They carry the same value with colleges and employers as a traditional GCSE.

This course will develop students' knowledge and understanding of the ICT sector and provide them with opportunities to develop associated practical skills. It covers ICT in Society; allowing learners to explore the wide range of uses of hardware, application and specialist software, and ICT in context; introducing learners to a broad working knowledge of databases, spreadsheets, automated documents and images.

### What will I study?

#### Unit 1:

ICT in Society

#### Unit 2:

ICT in Context



### How will I be assessed?

**Unit 1:** 1 hour 20 minutes on-screen exam (40%). This unit allows learners to explore the wide range of uses of hardware, application and specialist software in society. They will investigate how information technology is used in a range of contexts, including business and organisations, education and home use.

**Unit 2:** Controlled assessment – Coursework (60%). This unit enables learners to gain a broad working knowledge of databases, spreadsheets, automated documents and images and to apply their knowledge and understanding to solve problems in vocational settings.

### Post 16 pathways and career opportunities

The ICT industry offers a wide range of exciting opportunities which include:

Data analyst; Digital content producer; Systems engineer; Web marketing manager.

### Skills Developed

You will develop a number of skills which are attractive to employer, colleges and universities including: Communication Coping with rapid changes in technology; Critical thinking Designing, programming, testing and evaluating software systems; Learning independently; Numeracy and data handling; Problem solving; Research; Taking on responsibility; Time Management.

## Media Studies GCSE

Examination Board: WJEC

### Course Outline

Media Studies offers learners the opportunity to develop knowledge and understanding of key issues and the ability to debate important questions about the media. It introduces learners to a conceptual framework for analysing the media, which also underpins study of the media at AS and A level. Although the course focuses predominantly on the contemporary media, this is contextualised and enhanced through the exploration of products from different historical periods. Through studying both established and evolving media forms, learners will develop their appreciation and understanding of the importance and role of the media in their daily lives.

### What will I study?

In Media Studies, you will study Media concepts such as audience, narrative, representation, genre and marketing. You will analyse and create a variety of exciting and contemporary media texts including:

- ✓ Video games
- ✓ Music videos
- ✓ Television
- ✓ Film
- ✓ Radio
- ✓ Newspapers
- ✓ Magazines
- ✓ Advertising and marketing



### How will I be assessed?

Coursework, which consists of creating a media product, makes up 40% of your overall grade. There are two written examinations, which make up the other 60%. The first examination requires you to explore media language and representation, whereas the second examination requires you to show understanding of media forms and products.

### Post 16 pathways and career opportunities

The media industries employ large numbers of people worldwide and operate as commercial industries on a global scale.

Related jobs: digital marketer, media planner, media researcher, music producer, runner- broadcasting /film/video, social media manager, television/film/video producer, camera person.



## Music GCSE Levels 1 & 2

Examination Board: WJEC

### Course Outline

GCSE Music offers students the chance to explore Music from lots of different eras, ranging from classical music to film music to rock and dance. This course gives students the opportunity to gain instrumental skills to improve their performance, compositional skills so that they can write songs and appraising skills to be able to listen and analyse music in order to understand what they are listening to.

### What will I study?

You will study three main elements:

- ✓ Performance
- ✓ Composition
- ✓ Appraising

Topics include:

- ✓ Orchestral music
- ✓ Film music
- ✓ Rock & Pop Music



### How will I be assessed?

#### Performance (35%)

Perform two pieces on your instrument, one solo and one group piece. These are marked by your teacher and sent to the exam board.

#### Composition (35%)

Produce two compositions during the two years, using different styles and techniques.

#### Appraising (30%)

There is an exam at the end of Year 11, which requires students to listen to differing genres of music and be asked to answer questions about what they are hearing.

### Post 16 pathways and career opportunities

GCSE Music will give you the skills so that you can go onto studying A level Music and other vocational music courses.

Related jobs: musician, conductor, song writer, composer, sound engineer



# Photography GCSE Levels 1 & 2

Examination Board: WJEC

## Course Outline

GCSE Photography can contribute a most enjoyable and creative dimension to students' education. Photography covers an increasingly broad area, from traditional use of camera, film and darkroom techniques to exploring, experimenting, expressing and communicating through various lens media such as video, photocopier, digital reproduction and replication. Photography is frequently used to document and record and as a visual source of information for other areas of study.

## What will I study?

Students will work in many areas of photography and explore areas such as:

- ✓ Portraiture
- ✓ Studio lighting
- ✓ Landscape
- ✓ Still life
- ✓ Documentary
- ✓ Photo journalism
- ✓ Narrative and reportage



Students will be encouraged to create a portfolio of "shoots". These will be presented in Google Classroom and a range of creative outcomes. Final selected photographs are mounted on display boards.

## How will I be assessed?

### Assessment 1: Candidate portfolio (60%)

Internally set and developed from personal and/or given starting points. The candidate portfolio must provide evidence of how the candidate has met each of the assessment objectives which include:

- ✓ Recording ideas
- ✓ Experimenting with photographic and lens based media
- ✓ Development of ideas/historical reference
- ✓ Final ideas/personal presentation

### Assessment 2: Externally set task/examination paper (40%)

Students will select a single question from the examination paper in January. This will be a starting point from which they produce a "body of work" which covers the assessment objectives listed above. They will then provide a sustained period of focused study no longer than 10 hours. All work is internally assessed and externally moderated.

## Post 16 pathways and career opportunities

GCSE Photography will lead you onto A level photography and vocational photography courses.

Related jobs: graphic design, illustration, advertising, fashion, gallery management, art therapy, teaching, publishing, media and television.

## Physical Education GCSE Levels 1 & 2

Examination Board: WJEC

### Course Outline

Learners will perform effectively in different physical activities by developing skills and techniques and selecting and by using tactics, strategies and/or compositional ideas. They will develop their ability to analyse and evaluate to improve performance in physical activity and sport.

### What will I study?

- ✓ Health, training and exercise
- ✓ Exercise physiology
- ✓ Movement analysis
- ✓ Psychology of sport and physical activity
- ✓ Socio-cultural issues in sport and physical activity



### How will I be assessed?

**Unit 1: Written exam 2 hours (50%)**

**Unit 2: Non-exam assessment (50%)**

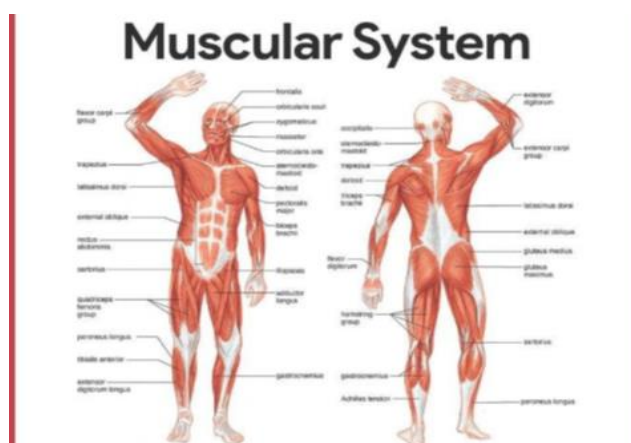
Students will be assessed in three different activities in the role of performer in at least one individual sport, one team sport and one other. One activity will be a major activity which will have a personal fitness programme linked to the activity.

Students on this course should realise that there is a significant extra-curricular involvement and all candidates will be expected to participate in school sport teams.

### Post 16 pathways and career opportunities

Physical Education GCSE leads to A levels and vocational courses in sport and science.

Related jobs: sports scientist, PE teacher, physiotherapist, professional sportsperson, sports coach, sports agent, nutritionist, dietician, personal trainer, analyst, journalist, strength and conditioning coach and sports development manager.



# IVET Public Services BTEC First Award Levels 1 & 2

Examination Board: Pearson

## Course Outline

This course is designed for students interested in a career in one of the public services, both uniformed and non-uniformed. There will be one unit that will be externally examined and three units to be covered as coursework over the 2 years.

## Opportunity for Outdoor Education

There will be a number of opportunities to take part in Adventurous Activities in the first year, based at Llandegfedd Reservoir. There will be opportunities to link the work with the Bronze Duke of Edinburgh Award.

## What will I study?

- ✓ Understanding the public service structure, how they are grouped and funded
- ✓ Understand types of public services and the work that they do
- ✓ Understand health and fitness and how it applies to the public services
- ✓ Investigative research project into a public service of your choice to research needs and review the findings

## How will I be assessed?

Pearson BTEC Level 1/Level 2 First Award in Public Services			
Units	Mandatory units	Assessment	Guided Learning hours
1	The role and work of the public service	External (1hour)	30
2	Working skills in the public service	Internal	30
Specialist units			
5	Health, fitness and lifestyle	Internal (externally assessed)	30
10	Adventurous Activities	Internal	30
4	Community Protection	Internal	30

25% of the course is externally assessed with two 1 hour exams (units 1 and 6).

## Post 16 pathways and career opportunities

The rationale for all qualifications in the BTEC First Suite in Public Service is to:

- ✓ Inspire and enthuse learners to consider a career in the Public Service sector.
- ✓ Give learners the opportunity to gain a broad knowledge and understanding of, and develop skills in the Public Sector.
- ✓ Give learners the potential opportunity, in due course, to enter employment within a wide range of junior job roles across the Public Service sector.



## Religious Studies GCSE Levels 1 & 2

Examination Board: WJEC

### Course Outline

Any news programme will show that believers from all faiths continue to make an impact in both international and domestic affairs. Consequently, any understanding of world events demands an appreciation of the role of religion in society. The GCSE course provides this through an intellectually stretching course that enables students to see the “bigger picture” and engage in topical debate. This GCSE explores the two world religions of Christianity and Buddhism in order to provide students with a Western and Eastern perspective on issues as wide-ranging as abortion, sexism and divorce. Students will also be introduced to the pursuit of philosophy by researching evidence for life after death and discussing what makes something good or evil. There is no requirement to be a follower of any particular faith to choose this course – all that is needed is an inquisitive and open mind.

### What will I study?

Year 10

- ✓ The environment
- ✓ Abortion
- ✓ Euthanasia
- ✓ Crime and punishment
- ✓ Philosophy

Year 11

- ✓ Sexism
- ✓ Sex and relationships
- ✓ Human rights and social justice
- ✓ Poverty
- ✓ Prejudice and discrimination



### How will I be assessed?

Students will sit two external GCSE examinations, one at the end of Year 10 and one at the end of Year 11. Both examinations are two hours long and there will be an opportunity to re-sit the Year 10 exam at the end of Year 11 should the student wish to do so. **THERE IS NO COURSEWORK IN THIS GCSE COURSE!**

### Post 16 pathways and career opportunities

This GCSE can lead to A levels.

Related jobs: social work, teaching, probation service, politics, publishing, travel and tourism, journalism, nursing and medicine.



# Retail Business Vocational Award Levels 1 & 2

Examination Board: WJEC

## Course Outline

Are you an independent learner with good IT skills? Do you thrive in a fast-paced environment? Do you dream of starting your own business one day? From marketing and merchandising to good customer service - are you fascinated by the world of retail business and eager to discover how it all works? If so, it's time to uncover your potential – find out more about this exciting qualification today!

## What will I study?

### Unit 1: The business of retail

You will:

- Be introduced to the business of retail and will explore the dynamic and competitive nature of the retail industry.
- Gain knowledge and understanding of different types of retail business and retail activity, as well as the impact of external factors on the industry e.g. growth in sustainability.

### Unit 2: Customer service for retail business

- Develop your knowledge and understanding of the principles of customer service for retail business and have the opportunity to investigate the customer service experience across a retail organisation selected by you.

### Unit 3: Merchandising and marketing of retail products

- Be introduced to the importance of visual merchandising and marketing retail products, and how retail businesses use visual merchandising and marketing to achieve their aims.
- Apply your knowledge and understanding to design visual merchandising installations and promotional materials.

## How will I be assessed?

### Unit 1: The business of retail

Examination – 1 hour 30 minutes, worth 40%

Multiple choice questions and short and extended answers

### Unit 2: Customer service for retail business

Project work – 6 hours, worth 30%

You investigate the customer service of a retail business.

### Unit 3: Merchandising and marketing of retail products

Project work – 8 hours, worth 30%

You design visual merchandising and marketing materials in response to a brief

## Post 16 pathways and career opportunities

The qualification allows a progression into further study and employment into the many diverse areas of business including roles in specialist areas such as finance, marketing, human resources and customer services.

Related jobs: content writer, customer service representative, E-commerce web developer, logistics, marketing assistant, marketing management, retail buyer, visual merchandiser, sales associate.



## Spanish GCSE Levels 1 & 2

Examination Board: WJEC

### Course Outline

**“¡Hablo español!”** Music to the ears of employers in all fields of work. Do not lose out to your European and even English counterparts who all continue to study a modern foreign language to at least 16. Do not fall into the trap of thinking that you will not need to speak a foreign language if you stay in Wales. There are 10 European firms in Wales, employing 20,000 people. Whatever job you want to do, knowledge of a language is a useful extra skill, which may give you the edge over your rivals.

Students will increase their understanding of the written and spoken word. They will develop further their ability to express themselves orally and in writing. The four language skills developed are listening, speaking, reading and writing. Lessons will include a variety of activities, including ICT and videos. Homework will be set at least once a week, and will include listening, reading and writing.

### What will I study?

The context for learning the language is organised under three broad themes, specified by the WJEC, which build upon work done in Key Stage 3.

- ✓ Identity and culture
- ✓ Wales and The World
- ✓ Current and future study and employment

### How will I be assessed?

**Speaking** 25%-Oral test

Foundation tier – 7-9 minutes. Higher tier – 10-12 minutes

**Listening** 25% - Written examination

Foundation tier – 35 minutes. Higher tier – 45 minutes

**Reading** 25% \_Written examination

Foundation tier – 1 hour. Higher tier – 1 hour 15 minutes

**Writing** 25% - Written examination

Foundation tier – 1 hour 15 minutes. Higher tier 1 hour 30 minutes



The final grade awarded will depend on the tier for which the student is entered. Foundation tier – Grades G to C. Higher tier – Grades D to A\*. Students may be entered for different tiers in different papers, according to their individual strengths.

### Post 16 pathways and career opportunities

Language skills are in demand and can be used in almost career, particularly in businesses that trade internationally.

Related jobs: tourism, government, politics, media, publishing, journalism, translator, interpreter, education, law, fashion, linguist, teacher and international aid worker.

# IVET BTEC First Award in Sport

Examination Board: Pearson

## Course Outline

BTEC First Awards are primarily designed for use in schools as an introductory Level 1/Level 2 course for learners who want to study in the context of a vocational sector. The knowledge, understanding and skills learned in studying a BTEC First will aid progression to further study and, in due course, prepare learners to enter the workplace.

This course provides an engaging and relevant introduction to the world of sport. It incorporates important aspects of the industry, such as fitness testing and training for sport and exercise, the psychology of sport, practical sports performance and sports leadership. It enables you to develop and apply your knowledge, while also developing a range of relevant practical, communication and technical skills. The qualification is 120 GLH, which is the same size and level as a GCSE, and is aimed at everyone who wants to find out more about the sport industry.

## What will I study?

- ✓ Fitness for sport and exercise
- ✓ Practical sports performance
- ✓ Applying the principles of personal training
- ✓ Leading sports activities

**NB: In order to be successful in this course you must have a strong knowledge of all sports. You will need to participate in team games, racket sports and follow a personal fitness programme. It is also desirable to be an active member of a PE extra-curricular team/club.**

## How will I be assessed?

Unit Title	Assessment Activity
Unit 1: Fitness for Sport and Exercise	Online Exam
Unit 2: Practical Sports Performance	Internal Assignments
Unit 3: Applying the Principals of Personal Training	Internal Synoptic
Unit 6: Leading Sports Activities	Internal Assignments

## Post 16 pathways and career opportunities

If you are interested in taking your study of sport further, the subject-specific knowledge and skills outlined above, and developed through studying this qualification, will give you a strong foundation for academic or vocational study at Level 3, including apprenticeships.





# IVET BTEC – Sweet - The Personal Growth & Wellbeing Programme

Examination Board: Pearson Edexcel

## Course Outline

This Level 2 qualification in Personal and Social Development builds on learners' strengths and teaches them the personal skills and techniques needed to progress to working life. Learners who achieve these qualifications will gain confidence and self-esteem for employment and be able to progress to level 3 BTEC qualifications

Sweet\* is an innovative and engaging qualification used to deliver a BTEC Level 1 or 2 qualification in Personal Growth and wellbeing. Sweet\* teaches valuable skills to help pupils lead happier, healthier and more successful lives.

## What will I study?

There are eight units:

1. Physical health and wellbeing
2. Emotional wellbeing
3. Social health and wellbeing
4. Sexual health and wellbeing
5. Personal identity
6. Environmental awareness
7. Financial awareness
8. Personal progress

## How will I be assessed?

How many units pupils complete, depends on their level of study

Resource	Qualification	Units to complete	GCSE equivalency	Qualification code	Performance Points
Level 2	L2: Extended Certificate	8 units (192 GLH)	2 GCSEs A*-C	603/6005/7	92
	L2: Certificate	5 units (120 GLH)	1 GCSE A*-C	603/6004/5	46
	L2: Award	3 units (72 GLH)	0.5 GCSE A*-C	603/6003/3	23
	L2: Subsidiary Award	1 unit (24 GLH)	0.25 GCSE A*-C	603/6002/1	11.5
Level 1	L1: Extended Certificate	7 units (210 GLH)	2 GCSEs D-G	603/6127/X	50
	L1: Certificate	4 units (120 GLH)	1 GCSE D-G	603/6126/8	25
	L1: Award	2 units (60 GLH)	0.5 GCSE D-G	603/6125/6	12.5
	L1: Subsidiary Award	1 unit (30 GLH)	0.25 GCSE D-G	603/6124/4	6.25

 **Pearson | BTEC**  
in partnership with:  
**Sweet** 

## Post 16 pathways and career opportunities

BTEC courses allow you to focus on a chosen career area like construction, healthcare, social science or digital careers when applying to college.



Thank you for reading our Options Booklet.